

# Crib Cosy

## Co-Sleeping Crib

ALL CLINICAL  
AREAS

Frequent Use

Maternity  
Neonatology  
Obstetrics  
Child care

SUPPORTABLE  
TO THE BED



**Child  
in Safety**

POSITIONABLE  
ABOVE THE BED

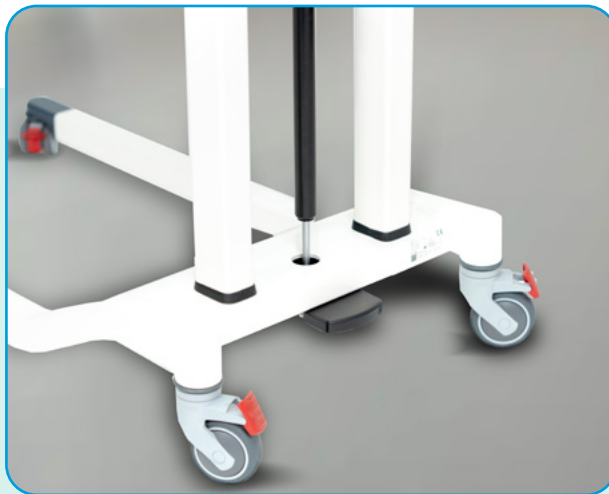
● **THE BEST BOND**  
*Between*  
**MOTHER and NEWBORN** ●  
the cradle that unites **comfort, safety and love**



[www.gardhenbalance.it](http://www.gardhenbalance.it)

## Standard equipment

- Can be opened bilaterally and therefore placed next to both sides of the bed
- Transparent side rails that disappear under the cot.
- Transparent walls.
- Height adjustable - equipment code GBTE0050
- Front and rear carrying handles for easy and comfortable control of the bassinet from any position.
- 4 swivel wheels, 2 with braking system.



**4 Swivel wheels  
2 with braking system**



**Front and rear  
carrying handles**



**Cradle that can be opened and placed next to the bed**



## The CRADLE THAT UNITES

Already in the first moments of life, newborns need their mother's touch to limit the effects of the stress that follows birth.

After giving birth, every **Mom wants to hear her newborn's breathing**, caress him, take care of him and reassure him.

**Crib Cosy is the sweet and safe answer to this need** offering a contact constant and safe, which strengthens the bond between mother and child, facilitating rest for both.

It is positioned **next to or above the bed**, allowing the mother to care for the baby effortlessly and completely independently.

It makes breastfeeding easier, strengthens the unique bond between mother and baby, improves sleep and makes every moment special.

### Safe for the baby...

The side rails, which can be tucked under the mattress of the hospital bed, prevent the risk of falling. The cradle, which can be placed on top of the bed, brings the newborn closer to the mother during hospitalization.

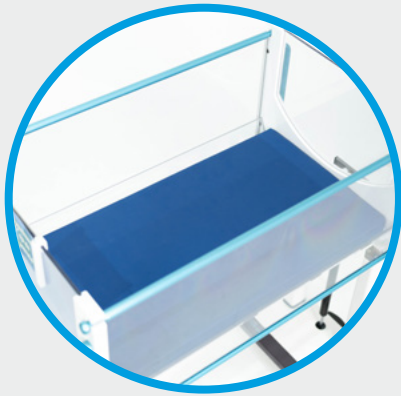


SUPPORTABLE  
TO THE BED



POSITIONABLE  
ABOVE THE BED

## Accessory



### MATTRESS

Water-repellent coating - code GBTE0049

#### DIMENSIONS

Length:	675 mm
Width:	350 mm
Thickness::	60 mm



### DIN RAIL

code GBTE0051



### PATIENT RECORD SUPPORT

code GBTE0052



## Technical data sheet

CND and EMDN	V0809
GMDN	38140
UDI-DI Code:	8720648522000
Progressive No./R	2785556/R
Product Code	GBTE0048
Wheels	4 swivel - 2 with braking system
Total length::	910 mm
Total width::	450 mm
Cradle length without carrying handles:	725 mm
Cradle length with carrying handles;	875 mm
Height::	750 mm - 1050 mm

### Produced by:



### Distributed EXCLUSIVELY by



### Gardhen Balance S.r.l.

Via G. Luraghi c/o Consorzio Il Sole - lotto S - 80038 Pomigliano d'Arco (NA) - Italia

Telefono: +39 081 8692160 - (selezione passante 5 linee)

+39 3913087453 (se la rete fissa non è raggiungibile)

E-mail: [info@gardhenbalance.it](mailto:info@gardhenbalance.it) - PEC: [gardhenbalance@pec.it](mailto:gardhenbalance@pec.it)

Visit our website [www.gardhenbalance.it](http://www.gardhenbalance.it) / Follow us on     

The images reproduced in this sheet are purely indicative and the dimensional values are nominal. The manufacturer reserves the right to make changes to the projects without prior notice. To identify the standard equipment and to choose any additional components, refer to the optional components catalogue and/or commercial proposals. In the event of conflicting data, the content of the commercial proposals shall prevail. In the event that no preferences are expressed regarding the colours of the devices ordered, they will be made with the colours shown in the technical sheet/brochure.

For regulatory references, please consult the user manual and the declaration of conformity.

Dep. EN\_420 rev. 16/04/2025